

# Case Study EQUANS

## Hughes House, Liverpool

### Project Overview

An iconic site, close to our north west HQ, we were delighted to be selected to work on the re-development of the former TJ Hughes department store on London Road, Liverpool.

Another project in collaboration with our partners at Equans, this highly sustainable, low-carbon scheme involved the construction of 258 sustainable apartments plus a ground floor retail and commercial space.

A rewarding and at times, challenging project, our team were on site for 42 weeks, delivering a bespoke curtain walling package.

We installed over 5000m<sup>2</sup> of Technal MX52 curtain walling suited with FY65 vent inserts. The curtain walling was designed to accommodate a striking, 200mm projecting feature fin.

System Used:  
Technal MX52 curtain walling  
with FY65 vent inserts



[www.redsystems.co.uk](http://www.redsystems.co.uk)  
0845 345 8772

The logo for RED SYSTEMS features a stylized red 'R' symbol followed by the words "RED SYSTEMS" in a bold, red, sans-serif font.

More Than A Glazing Company

# Snapshot



Residential



£2.5m  
Total Project Value



Liverpool



10 Storeys

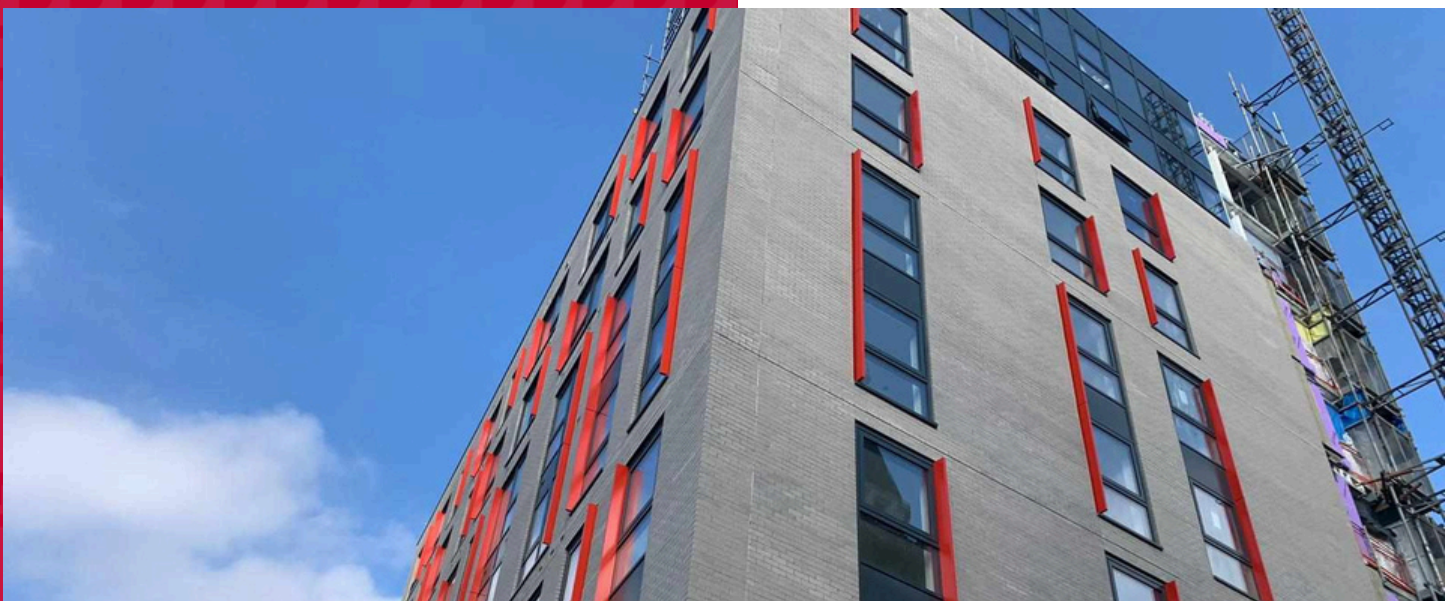


## Design

- RED Systems undertook the full design and engineering for the feature fins.
- This was particularly challenging due to location of the building and funnelling.
- The scheme also featured high level curtain walling with interfacing across the roof terraces and balconies

**A great collaboration once again with the team from RED Systems. Their approach is refreshing, effective & highly collaborative which really helps to foster a positive relationship from pre-construction, throughout the project timeline.**

Alyson Seddon  
Construction Director - Equans



[www.redsystems.co.uk](http://www.redsystems.co.uk)

0845 345 8772



More Than A Glazing Company

# Gallery

