

2024



CASE STUDY

STOCKPORT INTERCHANGE

WWW.REDSYSTEMS.CO.UK

STOCKPORT INTERCHANGE

Part of a major £1bn investment, the Stockport Interchange scheme is a high-profile, mixed-use development for main contractor, Willmott Dixon, designed to create a new, state-of-the-art transport hub, a two-acre town centre park and 196 high quality residential apartments.

Working alongside our partners from Remagin (EOS), RED Systems & our sister company, RED Optimal, were appointed to deliver a full, weathertight SFS and glazing solution for the apartment block aspect of the scheme in conjunction with development lead, CityRise. This landmark residential development, which comprises of 196 high quality apartments has provided much-needed new homes in the heart of Stockport town centre.





The scheme involved the installation of 4,400 m² of glazing and curtain walling, utilising Metal Technology products including: 5-35 hi+ glazing system and System 17 for the curtain walling aspect.

All the windows were fabricated well ahead of program and stored on site, to enable an accelerated installation once the floors were released.

OUR PARTNERS

A COMBINATION OF KNOWLEDGE,
SKILLS & SUPPLY CHAIN EXCELLENCE



SYSTEM USED: METAL TECHNOLOGY

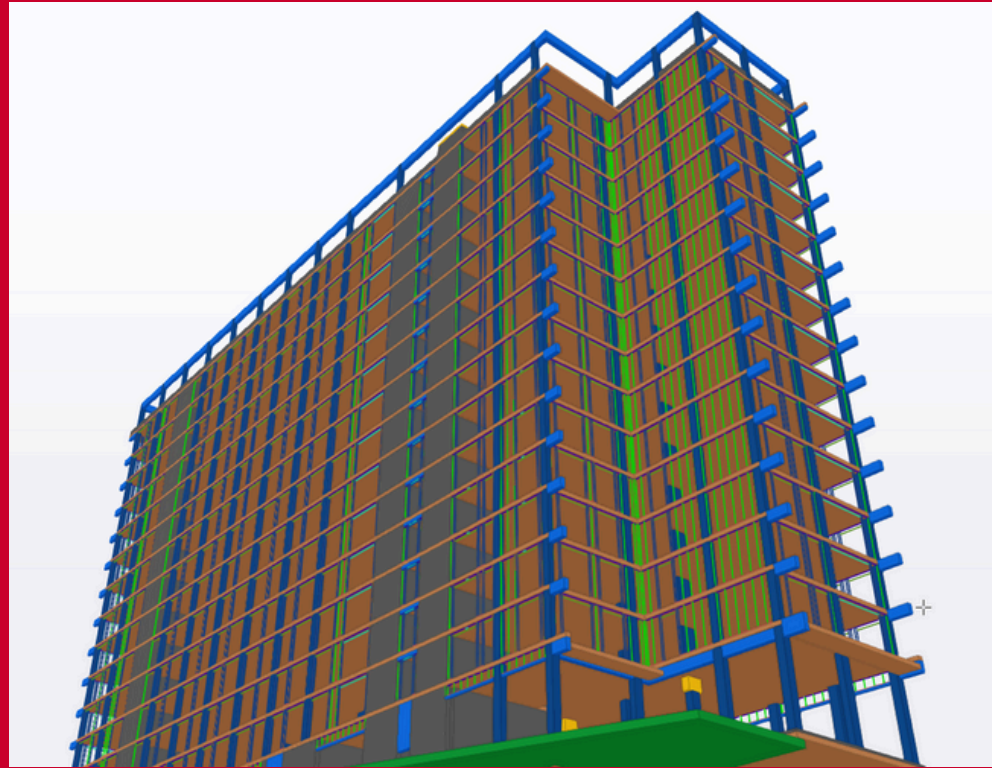
SYSTEM: 5-35HI+ GLAZING SYSTEM &
SYSTEM 17 CURTAIN WALLING

SECTOR: RESIDENTIAL

AREA: 4400M² GLAZING + 5800M² SFS

VALUE: £3M GLAZING + £500K SFS





SFS SOLUTION



WORKING ALONGSIDE OUR PARTNERS AT REMAGIN, WE WERE ABLE TO DELIVER A FAST, COST-EFFECTIVE AND SUSTAINABLE COMBINED SOLUTION THAT REALLY DELIVERED FOR OUR CLIENTS.

THE PRE-CUT NATURE OF THE REMAGIN SFS SYSTEM COMPONENTS ALLOWED US TO GENERATE A SERIES OF TANGIBLE BENEFITS, THAT HELPED LOCK-IN PROGRAM SURETY AND DELIVER A SEAMLESS INSTALLATION ACROSS BOTH THE SFS & GLAZING ELEMENTS

KEY BENEFITS:

- SIGNIFICANT MATERIAL WASTE REDUCTION DUE TO OFFSITE ACCURACY.
- INSTALLATION TIME SAVINGS.
- REDUCED PLANT REQUIREMENTS.
- LESS LABOUR ONSITE.
- ONE ORDER, ONE PI.



COLLABORATION IN ACTION

The scheme is the latest and largest new development being driven forward by the Stockport Mayoral Development Corporation (MDC), an innovative partnership that has set a new benchmark for town centre regeneration. A first for us here at RED and part of our move towards offering clients an all-encompassing Dry Envelope Solution, our glazing, curtain walling and SFS divisions worked closely with colleagues from Willmott Dixon to ensure we delivered an accurate, speedy, and cost-effective solution, that added value at every stage.

“

From our perspective, RED Systems performance on Stockport Interchange was exemplary. The quality of the installation, the attitude of their supervisor, the productivity on site as well as how they worked with us on any programme or commercial matters and their knowledge of wider issues in the industry, such as Reg 38, meant for us, they were one of our highest performing Supply Chain Partners on the project.

Combining the SFS and Curtain Walling packages with one partner worked fantastically well for us. It allowed for greater co-ordination on site and gave us tangible programme benefits. The use of protection screens meant that the sequence between trades was critical, and RED pulled out all the stops for us.

”

Mike Blackburn – Principal Surveyor, Willmott Dixon



IMPACT BEYOND CONSTRUCTION



THE STOCKPORT INTERCHANGE PROJECT HAS NOT ONLY TRANSFORMED THE ARCHITECTURAL LANDSCAPE OF STOCKPORT BUT ALSO GENERATED SUBSTANTIAL SOCIAL AND ECONOMIC BENEFITS:

- **Employment Opportunities:** The project created 160 new jobs, bolstering local employment.
- **Apprenticeships and Training:** Over 800 weeks of apprenticeships and training have been provided, nurturing the next generation of skilled professionals.
- **Work Placements:** 102 work placements have been offered, giving valuable industry exposure to participants.
- **Skills Programmes:** The launch of three Building Lives Academy skills programmes, designed to support care-leavers, armed forces veterans, the long-term unemployed, and young people with special educational needs, underscores our commitment to community and inclusivity.

As we celebrate this official opening of the scheme, we reflect on our passion for leaving a lasting legacy of investment, skills, and opportunities in the communities we serve. The opening of Stockport Interchange and Viaduct Park is not just a celebration of new beginnings but also a testament to the power of partnership and innovation in creating spaces that enhance lives.

Mike Green – Managing Director, RED Systems



PROJECT GALLERY

