

# Case Study

## Shakespeare North



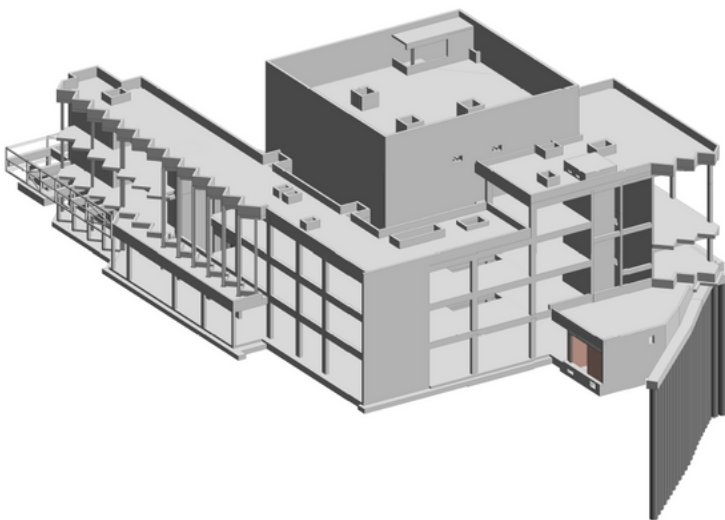
Project Overview

### Project Overview

A truly unique, award-winning project, Shakespeare North is a replica new build theatre within a modern cultural and educational building.

It celebrates the connections between Knowsley, Shakespeare and Elizabethan theatre, and completes the UK's Shakespearean triangle – London – Stratford-upon-Avon – Prescott.

We were involved in the construction of the main Teaching Complex which housed the replica Jacobean Timber Theatre and incorporated a range of specialist stage systems.



This landmark scheme demanded a collaborative approach & the Optimal team helped facilitate this by working closely with the project team here at Kier as well as colleagues from Hadley & ASL, to ensure the SFS element was robust and cost effective.

Andrew Brayne, Senior Project Manager,  
Kier

[www.redsystems.co.uk](http://www.redsystems.co.uk)

0845 345 8772

More Than A Glazing Company



# Snapshot



Community



£120k  
Total Project Value



Prescot,  
Merseyside



Infill SFS & Carrier  
Board to Façade

## Shakespeare North

### Design

We were delighted to be working on such a landmark award winning project. As we were involved with the construction of this replica Jacobean timber theatre, our design team worked alongside Kier, Hadley and ASL to ensure the SFS design was robust and cost effective.

Systems Used:

Hadley SFS

Carrier Board: British

Gypsum Glasroc X



[www.redsystems.co.uk](http://www.redsystems.co.uk)

0845 345 8772

More Than A Glazing Company

