

Case Study

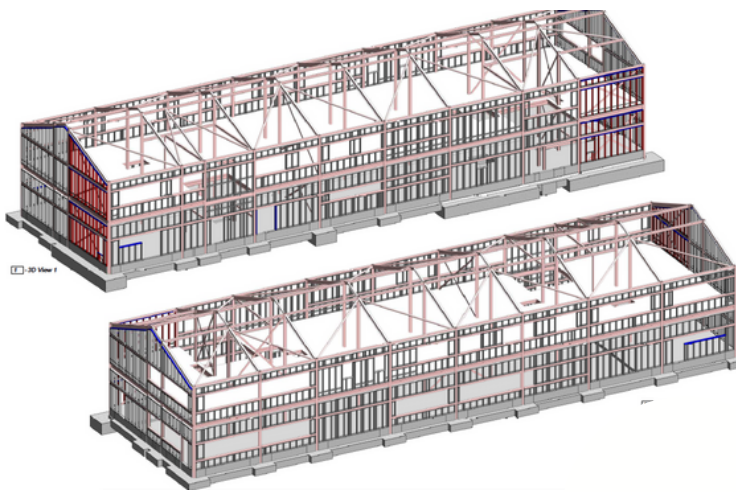
RAF Valley - Rotary Wing



Project Overview

The refurbishment of a fixed wing office building and provision of new simulators, training, and operations facilities. The Rotary Wing project required the design and construction of a new two-storey office block and refurbishment of an existing aircraft hangar.

We took on the challenge of working on two separate projects simultaneously, on a live site which required us to cross the runway that runs through the site. The Rotary and Fixed Wing buildings required state-of-the-art specialist facilities and equipment, along with spaces suitable for briefings, operation and mission control.



I have had the pleasure of working with Steve & his team on several schemes. Communication is always superb and the team embrace a fully collaborative approach, do an excellent job and always deliver on schedule.

Daniel Hampson
Project Manager, Kier



www.redsystems.co.uk

0845 345 8772

More Than A Glazing Company



Snapshot



Defence



£210 k
Total Project Value



Anglesey,
Wales



Carrier Board
to Facade

RAF Valley Rotary Wing

Design

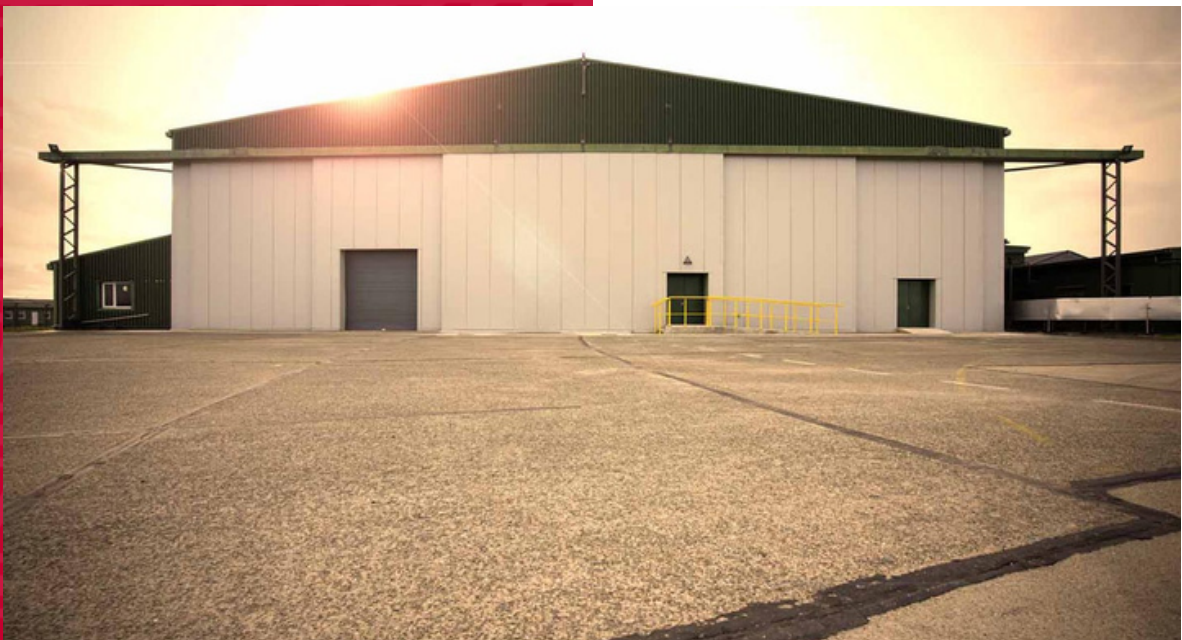
The design was developed by Kier and METSEC taking into consideration the buildings had to withstand the corrosive effects of sea-spray and salt due to geographical position.

Once finalised the designs were subsequently costed and the project delivered by Optimal.

Systems Used:
Hadley SFS



Carrier Board: Kevlar
Boarding System



www.redsystems.co.uk

0845 345 8772

More Than A Glazing Company