

Case Study

Marine Lake Health & Wellbeing Centre

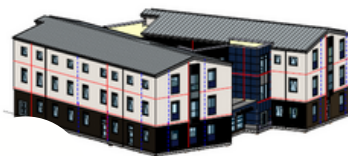


Project Overview

Working alongside colleagues from Eric Wright, we delivered the 24,000 sq ft clinic located in West Kirby, Wirral, just 12 months after work started on the site.

Marine Lake Health and Wellbeing Centre has been delivered as part of a partnership between Wirral Community Health and Care NHS Foundation Trust, Marine Lake and Estuary Medical Practice, and Age UK Wirral.

Gilling Dod Architects designed the £5m scheme, which features 20 doctors' consulting rooms and a community-led space, as well as support accommodation offices and meeting rooms for the local NHS trust.



By engaging early with our design department, the Optimal team helped us to agree the detailed design for the façade of this building.

Their flexible and pro-active approach meant communication was excellent and they were extremely easy to deal with at every stage.

Nick Galvin, Project Manager,
Eric Wright

www.redsystems.co.uk

0845 345 8772

More Than A Glazing Company



Snapshot



Healthcare



£205k
Total Project Value



West Kirby,
Wirral



Infill SFS & Carrier
Board to Façade

Marine Lake Health & Wellbeing Centre

Design

Eric Wright engaged EOS to do a detailed design for the façade of the Marine Lake Health & Wellbeing Centre.

These designs were then reviewed by our design team, costed up and delivered.

Systems Used:
SFS - EOS



Carrier Board: Siniat
Weather Defence



www.redsystems.co.uk

0845 345 8772

More Than A Glazing Company

