

Case Study

Glassworks - Student Residencies



Project Overview

Crosslane Student Developments bought the site, a former glassworks factory, back in March 2014. Pochin's Construction was the main contractor.

Andy Watson, director of Crosslane Student Developments, said: "According to Liverpool council's recently published student accommodation review up to 34,000 students need accommodation in Liverpool every year. We are pleased that we are able to help meet that demand with our newly opened site at Vauxhall Road and are keen to explore other opportunities in this vibrant city."



"This scheme, to create much needed new student accommodation in Liverpool, was a great example of collaboration, working alongside colleagues from METSEC once again to deliver the project on time and budget."

Steve Williams, MD,
RED Optimal

www.redsystems.co.uk

0845 345 8772



More Than A Glazing Company



Snapshot



Student
Accommodation



£195k
Total Project Value



Liverpool



Infill SFS & Carrier
Board to Façade

Glassworks - Student Accomodation

Design

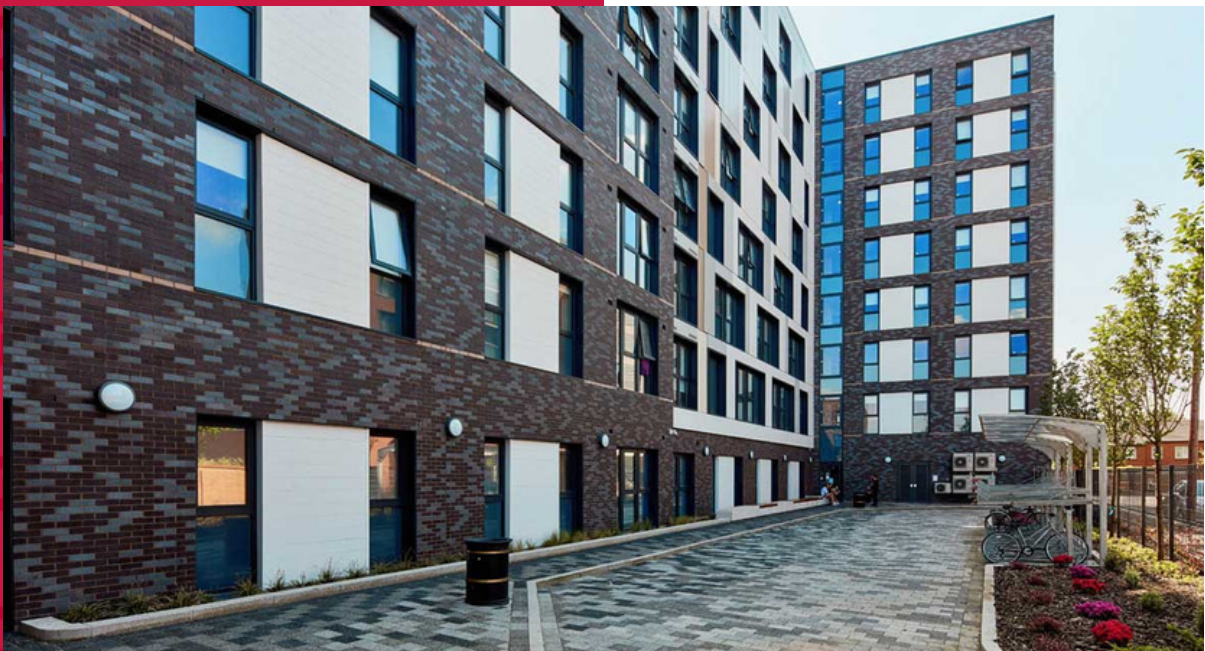
Working with colleagues from Pochin Construction for developers Crosslane, this project saw the creation of more than 300 en suite student apartments and luxury studios across eight storeys.

From initial budget costings POCHIN engaged METSEC and Optimal to produce a design and cost for the SFS package.

Systems Used:
METSEC SFS



RCM Y-Wall System



www.redsystems.co.uk

0845 345 8772

More Than A Glazing Company